

**Forecast Date: Tuesday, August 22, 2017**

Note - This operational forecast is intended for internal use. The official river forecasting agency of the Federal Government is the NWS. The NWS forecast for these locations can be found by clicking the blue hyperlink associated with each gage location. If there are any questions, please call the water control office at 1-(800)432-1208 or (314)331-8342.

**FORECAST NOTES:**[7 day QPF](#)

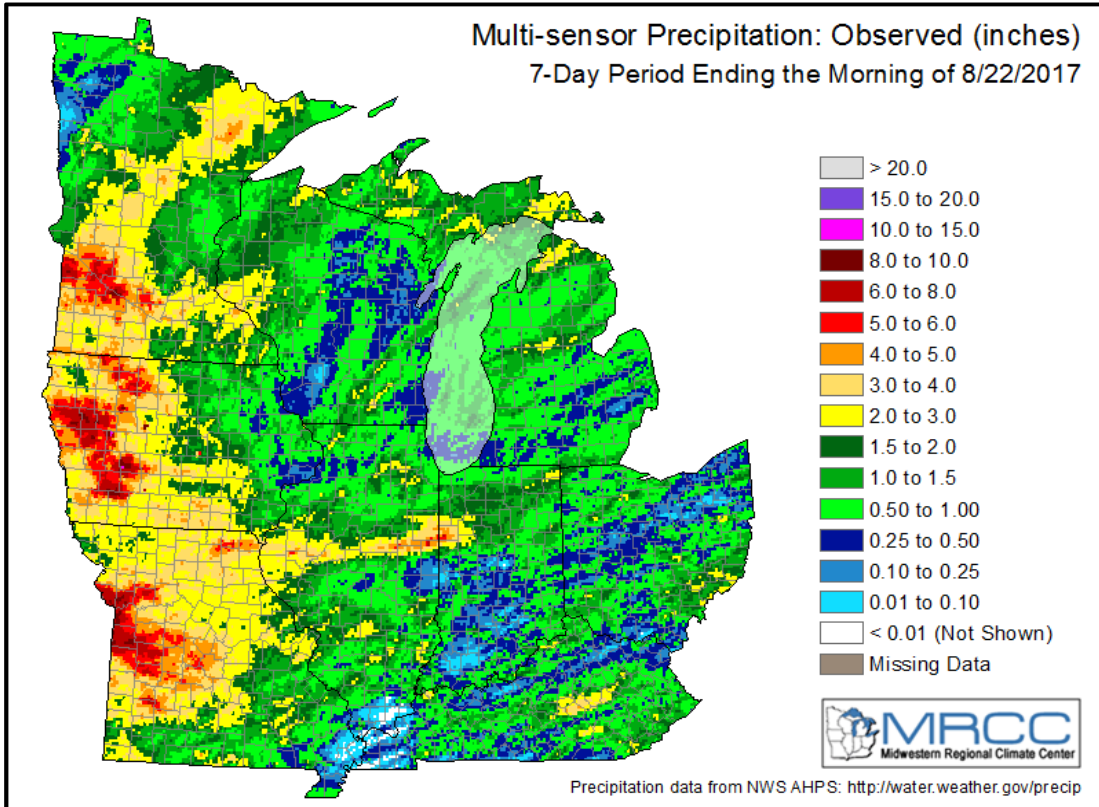
Location	06:00 22-Aug	Day 1 23-Aug	Day 2 24-Aug	Day 3 25-Aug	Day 4 26-Aug	Day 5 27-Aug	Day 6 28-Aug	Day 7 29-Aug
<a href="#">L&amp;D 22 TW</a>	6.35	6.7	6.9	7.0	7.2	7.2	7.0	
<a href="#">Louisiana</a>	11.84	11.9	11.7	11.8	11.8	11.8	11.8	
L&D 24 Pool	448.76	448.7	448.5	448.5	448.5	448.5	448.5	
<a href="#">L&amp;D 24 TW</a>	16.31	16.7	16.9	17.0	17.1	17.1	17.0	
Mosier Landing	435.28	435.5	435.6	435.7	435.7	435.7	435.7	
L&D 25 Pool	432.85	432.8	432.8	432.8	432.8	432.8	432.8	
<a href="#">L&amp;D 25 TW</a>	16.23	16.6	17.0	17.1	17.2	17.3	17.2	
<a href="#">LaGrange TW</a>	8.92	8.6	8.4	8.2	8.0	7.9	7.7	
<a href="#">Meredosia</a>	3.40	3.1	2.9	2.7	2.5	2.3	2.2	
<a href="#">Valley City</a>	2.76	2.5	2.3	2.2	2.0	1.9	1.8	
<a href="#">Hardin</a>	19.06	19.0	19.0	19.0	19.0	18.9	18.9	
<a href="#">Grafton</a>	15.07	15.1	15.1	15.1	15.1	15.1	15.1	
Mel Price Pool	418.28	418.2	418.2	418.2	418.2	418.2	418.2	418.2
<a href="#">Mel Price TW</a>	6.08	6.6	7.5	8.9	9.8	11.0	10.7	9.6
L&D 27 Pool	401.74	402.3	403.2	404.6	405.5	406.7	406.4	405.3
L&D 27 TW	387.45	387.9	389.3	391.5	392.8	394.5	394.0	392.3
<a href="#">St. Louis</a>	6.73	7.2	8.6	10.8	12.1	13.8	13.3	11.6
Brickeys	7.58	7.8	8.6	10.2	11.8	13.4	13.8	12.9
Kaskaskia L&D TW	355.43	355.5	356.0	357.3	359.0	360.5	361.5	361.0
Inflow (-1day)	480	470						
<a href="#">Chester</a>	9.67	9.7	10.2	11.5	13.2	14.7	15.7	15.2
Red Rock Landing	12.88	13.0	13.4	14.6	16.2	17.7	18.8	18.5
Grand Tower	14.44	14.6	15.0	16.1	17.7	19.1	20.3	20.1
Moccasin Springs	13.95	14.3	14.5	15.5	17.0	18.4	19.7	19.7
<a href="#">Cape Girardeau</a>	14.90	15.3	15.4	16.4	17.8	19.2	20.5	20.7
Grays Point	<b>41.92</b>	<b>42.3</b>	<b>42.3</b>	<b>43.2</b>	<b>44.4</b>	<b>45.8</b>	<b>47.1</b>	<b>47.4</b>
<a href="#">Thebes</a>	13.56	14.0	13.9	14.7	15.9	17.2	18.6	18.9
Commerce	9.17	9.6	9.5	10.1	11.2	12.5	13.9	14.3
Price Landing	4.21	4.6	4.4	4.7	5.5	6.6	8.1	8.7
Thompson Landing	18.46	18.9	18.5	18.6	19.2	20.2	21.8	22.5
Birds Point	13.43	13.9	13.2	12.8	12.9	13.7	15.4	16.4
<a href="#">Ohio at Cairo</a>	16.92	17.4	16.7	16.3	16.4	17.2	18.9	19.9

OR : Open River conditions and gates are free of the water surface at the L&D.

**Bold & Red :** Location is at or above Flood Stage

### 7-day Observed

(Tue-08/15 06:00 thru Tue-08/22 06:00)



### 7-day QPF

(Tue-08/22 06:00 thru Tue-08/29 06:00)

